



Pembroke College

START YOUR FUTURE HERE


# Introduction

What can we tell you about Pembroke? Well, facts on a page can't explain what it's really like to study here. But we can tell you that we're an open, friendly and forward-looking College, with a welcoming atmosphere that springs from the truly diverse community of people who study and teach here.

Our students come from all kinds of backgrounds, across the UK and beyond. But they all have two things in common. First, a deep interest in their subject. Second, a strong desire to reach their academic potential.

In turn, we strive to provide them with a nurturing and supportive environment. This is reflected in the fact that recent exam results have been exceptionally strong. So if you're keen to learn at the highest level with plenty of expert support, come and see us.





Of course, we're not just about study. Within our historic walls you'll also find stunning surroundings, cosy affordable rooms and top facilities for rest and play as well as work. (Did we mention the excellent food?) Pembroke is right in the centre of Cambridge, with easy access to all this ancient bustling city has to offer.

We believe diversity is key to success. People don't just 'fit in' at Pembroke, they thrive. And the College in turn thrives on the varied perspectives and dynamism each new generation brings. Our students help create our future. So if you want a stimulating student life, start your future here.

[www.pem.cam.ac.uk](http://www.pem.cam.ac.uk)







# Teaching and support

## Undergraduate Study

It's not a problem if you don't yet have a crystal-clear idea which areas of your degree subject you want to concentrate on. What's important is to choose a course that fits your own range of interests. Cambridge courses are known for their scope and flexibility, covering subjects broadly at first before specialising in the later years. So you can select from a huge variety of options and specialise as you progress.

The University's three terms – Michaelmas, Lent and Easter – focus mainly on teaching, with the final weeks of the academic year usually devoted to revision and exams. The busy timetable is balanced with long holidays to let students catch up on reading or study – or to relax, travel or gain work experience.



## Teaching

The Cambridge style of teaching includes 'supervisions' – weekly teaching in small groups, usually of two or three, to allow plenty of interaction between lecturer and students. Pembroke supervisors cover a wide range of subjects, and supervisions are a valuable supplement to the core teaching provided in University lectures, seminars and practicals.

Like all Cambridge colleges, Pembroke uses supervisors from across the University to match our students' interests.

## Support

Every undergraduate has a Director of Studies (DoS) who helps arrange your supervisions and advises on your workload and University lectures. You also have a personal Tutor to talk to about the non-academic side of life. This includes personal or financial issues, as well as advice on student funding and other forms of support.

Students with disabilities, specific learning difficulties or health issues not only have access to support in College, but also to the University's excellent Disability Resource Centre.

Find out more at:

[www.disability.admin.cam.ac.uk](http://www.disability.admin.cam.ac.uk)



I couldn't wish for a better second home than Pembroke. Everyone here looks after you – the Porters, the Master, the Kitchen staff, and of course your DoS and Tutor, who will actively look after your wellbeing, not just academic standards. It feels great to know that there's always someone around in college to talk to me and help me out!

Jay; Music

















# Life at Pembroke

Pembroke is dynamic and inclusive. We're a medium-sized Cambridge College, with around 130 students in each year.

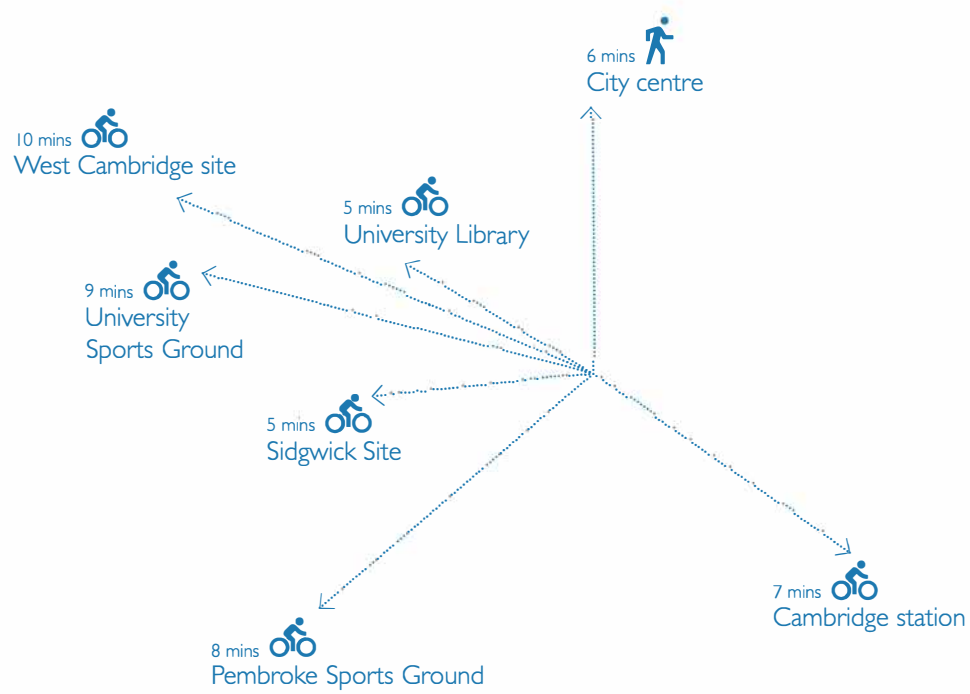
To help you settle in, you become part of a College family. We pair you up with a fellow first-year student, and also with second-year students in your subjects.

You'll also have the support of Pembroke's Welfare Team and the University Counselling Service if you ever need a listening ear.





## Cycling distances











# Facilities



Student Common Room (the Junior Parlour)



Bar



Library



Computer room



Multi-gym



Theatre and drama room



Meeting rooms



Common/lounge rooms



Music room



Darkroom



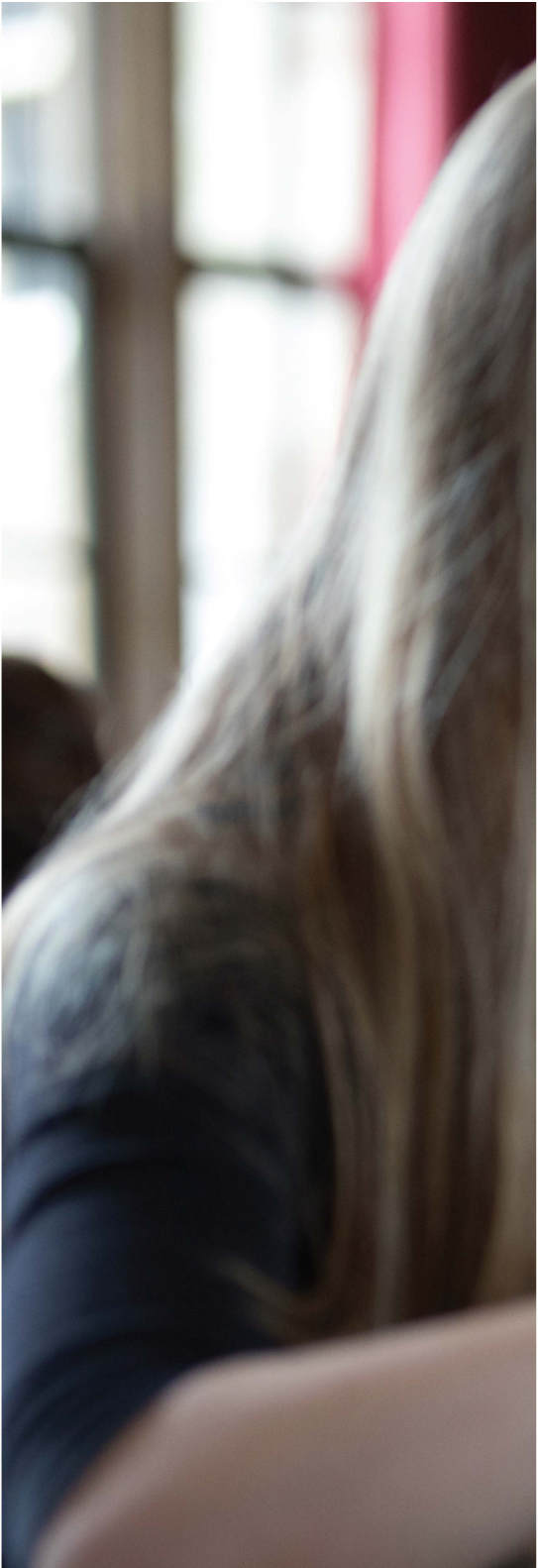
Art room



Table tennis room



Self-service laundries







## Sports



Rugby



Football



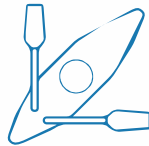
Hockey



Cricket



Tennis (grass and hard court)



Rowing



Netball



Squash

And more!

## Food and drink

At Pembroke we cater for a wide range of dietary needs and source our food responsibly wherever possible. We've earned an enviable reputation for the quality of meals served in our magnificent dining hall. Away from the books, students relax in our student common room or bar next to one of the College's beautiful garden areas – a popular spot during summer term!

# Dietary requirements



Vegetarian



Vegan



Gluten-free

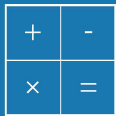


Dairy-free



*The Simply Pembroke range*  
(free from 13 major allergens)

# Clubs and societies



Stokes Society for  
Mathematicians & Scientists



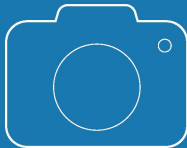
History Society



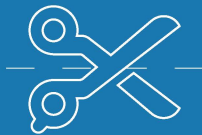
Pembroke Players Theatre



Music Society



Art & Photographic Society



Collage Society



Pembroke Politics



Pembroke Poets

And more!









What struck me most about Pembroke when I arrived was how lovely everyone is here; it's such a cliché but it's definitely become a second home for me!

Sarah; Human, Social and Political Sciences























# A voice for students

Our Junior Parlour (JP) reps are the student voice within the College, representing undergraduates' social and academic interests and organising all kinds of events throughout the academic year:

## Events



Freshers' Week events



Bops  
(parties)



Music recitals



Debates and talks



Pembroke Player  
performances



Film nights



Karaoke



Punting



May Ball  
(end-of-year party)

And more!













Pembroke is a place that it's hard not to feel at home in. Wherever you come from, whatever your interests, background or sense of humour, at Pembroke you'll find your place and be embraced by our community. It's a college where people work hard and that's a big part of our ethos, but it's also extremely friendly, sociable and active in university life. I think I would love Cambridge whichever college I was at but I do feel extremely lucky to have chosen Pembroke – the good food is definitely part of that!

Cora; History of Art





# Accommodation

## Pembroke

undergraduates have the option to live in College accommodation for the duration of their degree, which really helps to reduce living costs.

## Rooms in College

All first years live on the central College site, which is the ideal base to settle into your Cambridge adventure. Our warm comfortable study bedrooms are non-sharing, with access to baths/showers and cooking facilities. We also offer adapted rooms in Foundress Court for those who need them.

## College houses

Undergraduates in later years often opt for the independence of living in Pembroke-owned houses, close to the College and arts/sciences faculties, or slightly further away near our sports ground. A handy subsidised bus service links Pembroke to departments and College houses in west Cambridge.

## Rent

Wherever you choose to live, you'll find our charges much more affordable than commercial rents around Cambridge. We charge rent termly, so you only pay for the time you're here. We can also usually allow students to stay on during holidays for academic reasons, on payment of a vacation rental fee.

Find out more at:

[www.pem.cam.ac.uk](http://www.pem.cam.ac.uk)

















# Costs and financial support

At Cambridge we aim to make sure that no student who has been offered a place here is unable to take it because of financial hardship. We're well aware student life can be expensive, but at Cambridge the costs of living are very reasonable. You can find out more on our website – you'll probably be pleasantly surprised!

## Support for undergraduates

Pembroke offers a range of support for students. To keep costs as low as possible, the College provides excellent academic resources, competitively priced accommodation and discounted food for students with a Pembroke card.

The College can provide extra support when required – for example, in cases of unforeseeable hardship or for travel grants. Our popular semester and summer schools for international students from universities across the world also provide a great source of paid holiday employment for our undergraduates, giving them work experience as student tutors and event organisers.

## Means-tested



The Cambridge Bursary scheme:  
Pembroke pays half of each  
bursary awarded



Pembroke-specific means-tested  
support

## Non-means-tested



Vacation study grants



Travel awards



Academic enrichment  
(prizes, book grants, language costs)



Subject-specific expenses (such as  
materials for architecture or music)



Extra-curricular costs  
(such as for sport, music or drama)



Hardship funds



Student counselling

### Find out more

Pembroke Admissions Office:

[adm@pem.cam.ac.uk](mailto:adm@pem.cam.ac.uk)

[www.pem.cam.ac.uk](http://www.pem.cam.ac.uk)

+44 (0)1223 338154

Cambridge Bursary Scheme:

[www.cambridgestudents.cam.ac.uk/cambridgebursary](http://www.cambridgestudents.cam.ac.uk/cambridgebursary)



















# How to apply

Pembroke College may occupy historic buildings, but our ethos is forward-looking and progressive.

We're determined to admit the best students regardless of school background, ethnicity, political or religious views, social class, or sexual or gender orientation. If you're one of the highest performing students in your school or college, on course to achieve outstanding exam results, you stand a genuine chance of a place with us.

## What happens when you apply?

The better your exam results and predicted future results, the better your chances. That said, we assess candidates in a holistic way, which means we also take into account your school references, personal statement, admission assessments (if applicable), interview performance and any work you submit to us. Our aim is to assess your interest in the subject and your potential to study it at degree level.

## How to prepare

Nervous about interviews? We only call those who stand a realistic chance of getting a place, so an invitation means you should think positive!

Our questions are challenging but relate mainly to subjects you've studied. So before you come, look over relevant school work, your personal statements and – if relevant – any work we ask you to submit to us. You'll find lots of advice on the University website about how to prepare.



## Who are we looking for?

Simply, we want to admit the brightest students, whatever your background. As well as ability, we consider your commitment and enthusiasm for the subject you're applying for. We also look at any opportunities you've taken to develop your subject interest outside the school curriculum.

At interview, we want to see if you can think through problems without a book to give you the 'right' answer. If we are looking for a particular type of student, it's someone who's doing really well at school, is very interested in the subject they're applying for and wants to engage with new, challenging (and interesting!) questions about that subject. We want students who are keen to do their best and fulfil their potential.

## Applicants from outside the UK

We're delighted to welcome students from all over the world to study at Pembroke and sample a unique taste of UK life. You can apply via UCAS following the normal procedure, and should also check the University website for any extra forms you need to complete.

Find out more:

[www.pem.cam.ac.uk](http://www.pem.cam.ac.uk)

Pembroke Admissions Office::

[adm@pem.cam.ac.uk](mailto:adm@pem.cam.ac.uk)

+44 (0)1223 338154

UCAS:

[www.ucas.com](http://www.ucas.com)



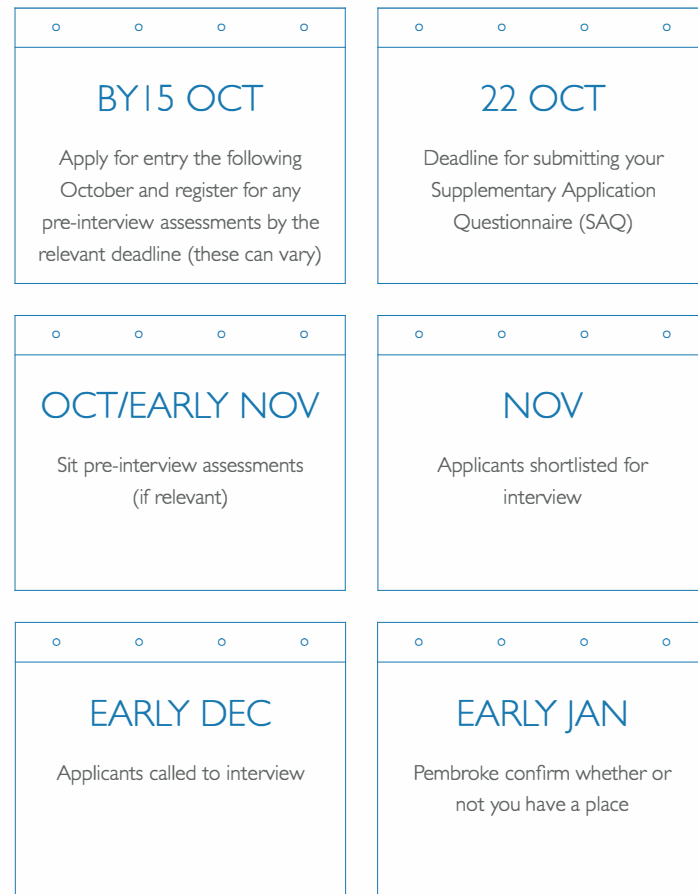








## Application key elements



If you're applying from abroad don't forget that you need to submit a Cambridge Online Preliminary Application (COPA) too. Further information can be found at: [www.undergraduate.study.cam.ac.uk/applying/copa](http://www.undergraduate.study.cam.ac.uk/applying/copa).

## Come and see us

What better way to get a real feel for  
Pembroke than to visit?

Come to an Open Day and take a look around. You'll see the College for yourself and have the chance to speak to some of our Fellows and current students.

Don't worry if you can't visit. We're always happy to answer questions from teachers, parents, carers and especially prospective students by phone or email too.

### Find out more

Pembroke College Open Days:

[www.pem.cam.ac.uk](http://www.pem.cam.ac.uk)

Cambridge University Open Days

[www.undergraduate.study.cam.ac.uk/events/open-days](http://www.undergraduate.study.cam.ac.uk/events/open-days)

Cambridge Bursary Scheme:

[www.cambridgestudents.cam.ac.uk/cambridgebursary](http://www.cambridgestudents.cam.ac.uk/cambridgebursary)



























All information correct at the time of going to print: June 2018





Pembroke College

The Admissions Office  
Pembroke College  
Cambridge CB2 1RF

Telephone **01223 338154** (direct line)  
Fax **01223 338163**

[admissions@pem.cam.ac.uk](mailto:admissions@pem.cam.ac.uk)  
[www.pem.cam.ac.uk](http://www.pem.cam.ac.uk)

